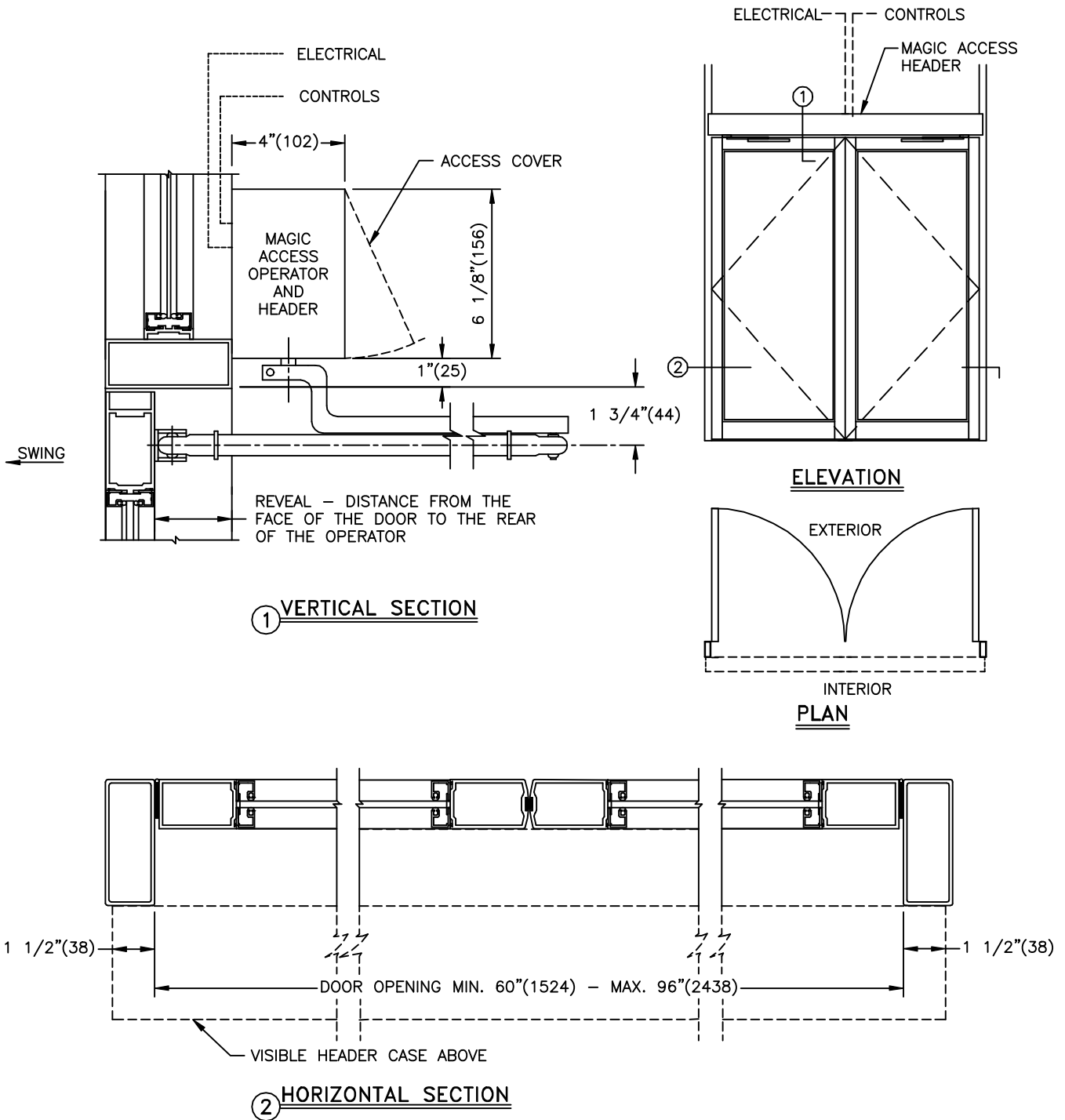


**STANLEY**

JOB NAME \_\_\_\_\_  
LOCATION \_\_\_\_\_  
DOOR NUMBER \_\_\_\_\_

**MAGIC ACCESS**  
PAIR DOORS  
WITH TRANSOM  
VISIBLE "OUT"



- NOTES:
1. DETAILS NOT TO SCALE.
  2. ELECTRICAL REQUIREMENTS:  
120VAC, 10 AMPS MIN. TO OPERATOR  
BY ELECTRICAL CONTRACTOR.
  3. DOORS (END LOAD DOORS), FRAMES AND HARDWARE BY OTHERS.
  4. DOORS MUST BE NON-LATCHED FOR PROPER OPERATION.