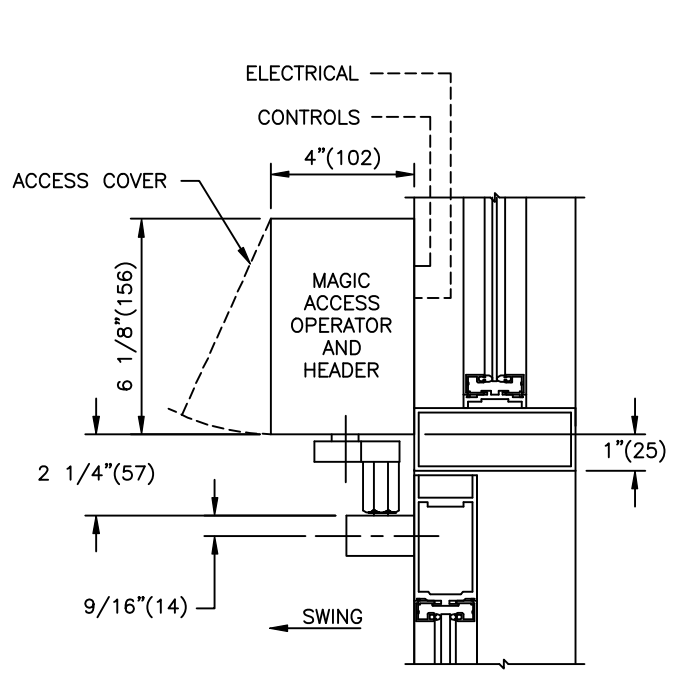


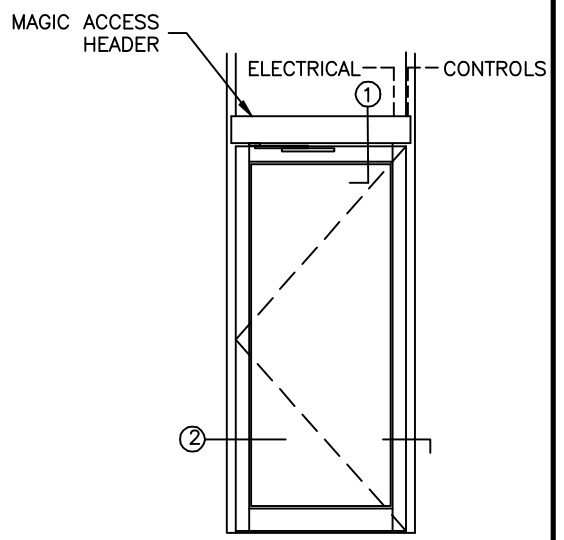
**STANLEY**

JOB NAME \_\_\_\_\_  
 LOCATION \_\_\_\_\_  
 DOOR NUMBER \_\_\_\_\_  
 SHEET \_\_\_\_\_ OF \_\_\_\_\_

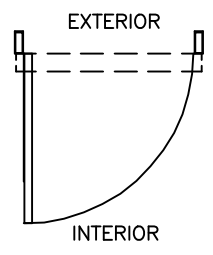
**MAGIC ACCESS**  
 SINGLE DOOR  
 WITH TRANSOM  
 VISIBLE R.H. "IN"



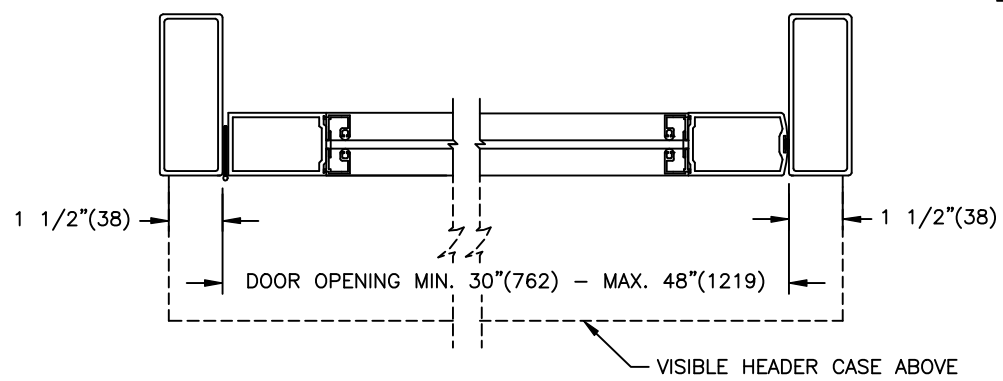
① VERTICAL SECTION



ELEVATION



PLAN



② HORIZONTAL SECTION

- NOTES:
1. DETAILS NOT TO SCALE.
  2. ELECTRICAL REQUIREMENTS:  
120VAC, 5AMPS MIN. TO OPERATOR BY ELECTRICAL CONTRACTOR.
  3. DOORS (END LOAD DOORS), FRAMES AND HARDWARE BY OTHERS.
  4. 32" CLEAR DOOR OPENING REQUIRED TO MEET A.D.A. REQUIREMENTS.
  5. DOORS MUST BE NON-LATCHED FOR PROPER OPERATION.