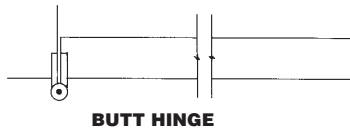
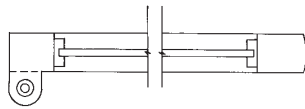


1. The following drawings note control wires extending to the operator. Please refer to the "Controls and Accessories" division for controls and wire information.
2. All drawings, within this division, note "doors, frame and hardware by others". Please refer to the 'Sentrex™ Swing Door System' division for Stanley swing doors and frames.
3. For all visible headers, in most standard applications, the header must measure 3" larger than the door opening width. This provides 1 1/2" overlap on both jambs which is used for mounting.
4. Please note: For center pivoted door(s) swinging inward, with emergency breakout capabilities, visible 'out' arm(s) application (header located on push side of door(s)) does not allow for door(s) to breakout to full open position. 'In' application (header located on pull side of door(s)) recommended. Interior door(s) in a vestibule is a typical example.

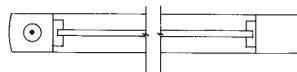
SWING OF DOORS



BUTT HINGE



OFFSET HINGE



CENTER PIVOT



SWING CLEAR HINGE

MAGIC-ACCESS[®]