

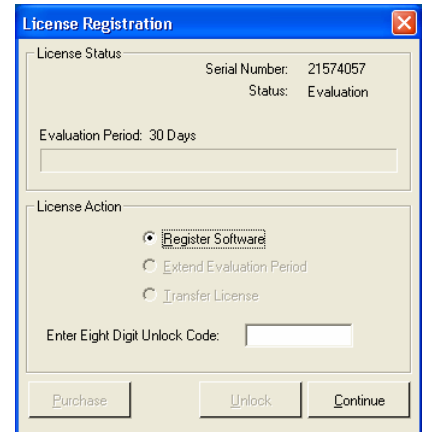
Initial Setup

Install Discover

1. Install Discover from the **Discover:Install** CD.
2. Make sure that the computer or computer based AAC Device has the Microsoft .NET Framework installed – a copy of this installer is placed on the Discover installation CD.

For users with a version of Discover software that does not require Discover:Switch or Discover:Kenx hardware (i.e., Mercury from Assistive Technology Inc.), please complete Step 3:

3. When the **License Registration** window appears, call the company from which you obtained your computer based AAC device to obtain an unlock code. (The Serial Number that is listed on the License Registration window on the screen will be needed in order to obtain the proper Unlock Code.)
4. In the **Enter Eight Digit Unlock Code** text box, enter the unlock code.
5. Click **Unlock** – notice, next to **Status:** the word Evaluation should change to Licensed.
6. Click **Continue**.



Screen Resolution

1. Ensure that the screen resolution of the computer or computer based AAC device is set to 1024 x 768.

Speaking Dynamically Pro

1. On the Discover AutoRun (Discover:Install CD startup) screen, click **View the Product Documentation**.
2. Double click the **Utilities** folder.
3. Copy the **+main** board to the **C:\Program Files\Boardmaker with SD Pro\Templates\SDP Sample Boards** directory. (Before copying, consider renaming the existing **+main** board before copying this one.)
4. Launch this **+main** board and set it as the Speaking Dynamically Pro Startup Board:
 - a. From the **Dynamic Boards** pull down menu, select **Startup Board**, then click **Use Current Board**, then click **OK**.
5. Have Speaking Dynamically Pro set for **Auto Scan** for its Access Method:
 - a. From the **Dynamic Boards** pull down menu, highlight **Access Method**, then select **Auto Scan**.
6. Ensure that the following two application **shortcuts** are named exactly (not case sensitive) and appear in the **C:\Program Files\Boardmaker with SD Pro\SDP Externals** directory:
 - a. iexplore (shortcut for Internet Explorer)
 - b. wordpad (shortcut for WordPad)

Using Discover with Speaking Dynamically Pro

Launching and Accessing Communication

1. Activate **Discover**.
2. Activate **Discover** when the first group is highlighted.
3. Activate **Discover** when the first subgroup is highlighted.
4. Activate **Discover** when the **Speaking Dynamically Pro** key is highlighted.



5. Activate Discover as needed to activate the highlighted choice(s) in **Speaking Dynamically Pro**.



Accessing Other Programs

Any board in Speaking Dynamically Pro can have a key (or keys) designated to launch software. Also, Speaking Dynamically Pro can be set to start at a particular screen and can be set to automatically start scanning the choices. Please see the Speaking Dynamically Pro documentation for the steps on how to setup these tasks. For this document, the pictured Speaking Dynamically Pro board will be used to launch WordPad and Internet Explorer.

1. Activate **Discover** when the **Launch WordPad** key is highlighted.



2. Activate **Discover** once WordPad is loaded.
3. Notice a different setup appears that is appropriate for accessing the functions of WordPad.
4. Explore this setup to type some text.
5. When done exploring, activate **Discover**.
6. Activate **Discover** when the fourth group is highlighted.
7. Activate **Discover** when the third subgroup is highlighted.
8. Activate **Discover** when the **Exit** key is highlighted. (This will exit *WordPad*.)



Discover and Speaking Dynamically Pro

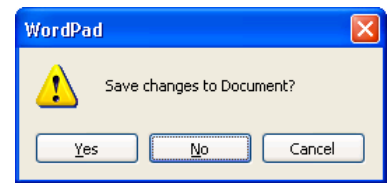
Madentec Limited, 4664 – 99th Street, Edmonton, Alberta, Canada T6E 5H5

(877) 623-3682 • www.madentec.com

Enabling Extraordinary People to do Ordinary Things!



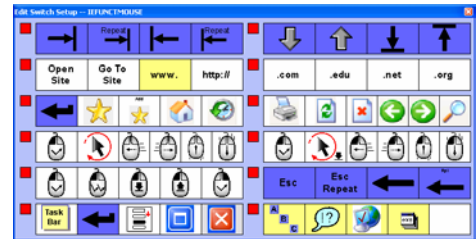
9. If necessary, activate **Discover**.
10. Activate **Discover** when the first group is highlighted.
11. Activate **Discover** when the third subgroup is highlighted.
12. Activate **Discover** when the N key is highlighted. (This will activate the No button in the Save Changes to Document dialog box and exit *WordPad* without saving.)



13. Notice, **Speaking Dynamically Pro** is now active and begins to scan.
14. Activate **Discover** when the **Launch Internet Explorer** key is highlighted.



15. Notice a different setup appears that is appropriate for accessing the functions of Internet Explorer.
16. Explore this setup to browse the internet.
17. When done exploring, activate **Discover**.
18. Activate **Discover** when the sixth group is highlighted.
19. Activate **Discover** when the first subgroup is highlighted.
20. Activate **Discover** when the **Exit** key is highlighted. (This will exit *Internet Explorer*.)



21. Notice, **Speaking Dynamically Pro** is now active and begins to scan.
22. Continue to use **Discover** to access **Speaking Dynamically Pro**.



Discover and Speaking Dynamically Pro

Madentec Limited, 4664 – 99th Street, Edmonton, Alberta, Canada T6E 5H5

(877) 623-3682 • www.madentec.com

Enabling Extraordinary People to do Ordinary Things!

